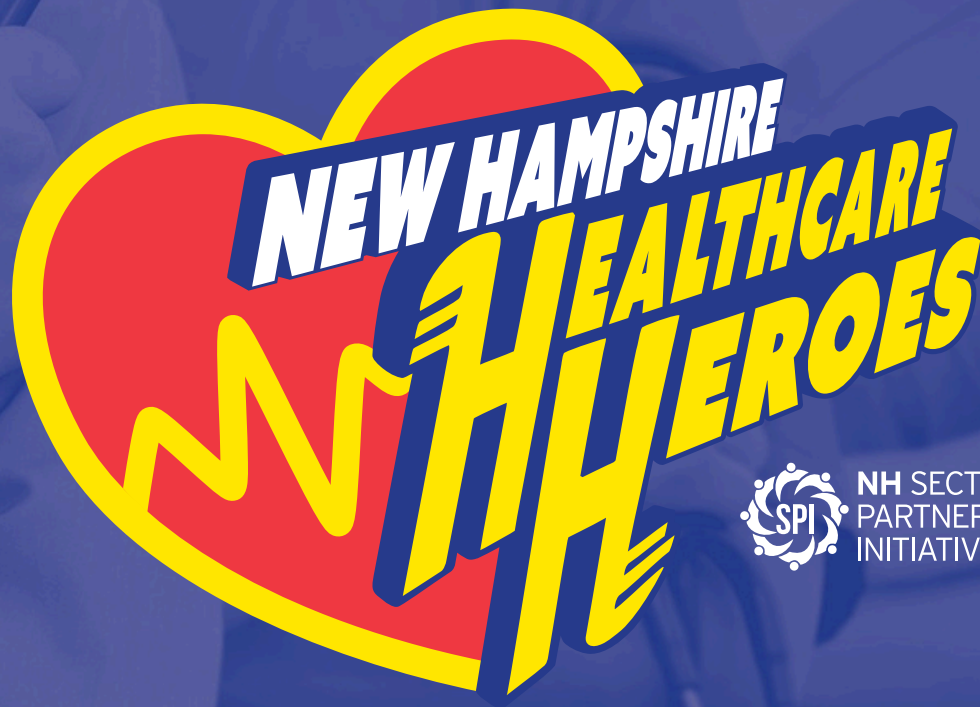


May  
2024

# SOUTHERN NH AREA HEALTH EDUCATION CENTER BLITZMAIL

Visit our [website](#) to  
see more online  
learning opportunities



NH SECTOR  
PARTNERSHIPS  
INITIATIVE

# We all know healthcare heroes.

## Nomination deadline

May 15, 2024

### Who can be nominated?

We welcome nominations for:

- clinical and nonclinical providers
- administrators
- educators
- facilities
- custodial and kitchen staff
- others who provide direct or indirect care to patients and families.

When the pandemic hit, we saw those working in healthcare repeatedly go above and beyond the call of duty. Since late 2020, we honored dozens of these individuals as New Hampshire Healthcare Heroes. The effort was so well received that we want to do it again because their stories are powerful and inspirational and may encourage others to consider a career in healthcare. We're asking YOU to nominate an individual in the healthcare field who has gone above and beyond their role this year.

### Selection process

The NH Healthcare Heroes board of volunteers will review the nominations and announce the winners and runners-up for each region in the state

### What the heroes get

Healthcare Heroes will be honored in a pinning ceremony hosted with each winner's employer and streamed on Facebook Live. Each winner will receive a banner and customized swag bag from our supporters.

**Nominate a Healthcare Hero**



**[snhahec.org/healthcare-heroes](https://snhahec.org/healthcare-heroes)**



a Point32Health company

Southern NH AHEC

Seacost Public Health Network

Connections for Health IDN 6

Fountain Insurance Agency

NH Charitable Foundation

Seniors Helpers of Southern NH

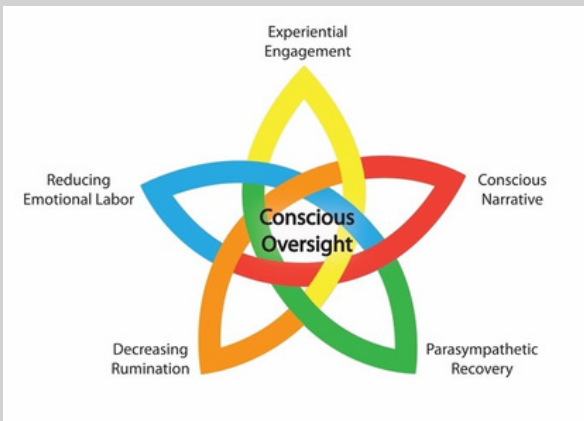
AmeriHealth Caritas

Please email [spi@snhahec.org](mailto:spi@snhahec.org) for more information.

# Strategies to Address Provider Burnout

## THE CE-CERT SKILLS: SUSTAINING A CAREER IN THE HELPING PROFESSIONS

Components for Enhancing Career Experience and Reducing Trauma



**WEDNESDAY MAY 29TH, 2024  
8:30AM - 4:30PM**

**THE DERRYFIELD RESTAURANT  
625 MAMMOTH RD,  
MANCHESTER, NH 03104**



**Brian Miller P.H.d**

Brian Miller, Ph.D. provides training and consultation on topics of secondary trauma, trauma informed supervision, and implementation processes nationally and internationally. He is an individual member of the National Child Traumatic Stress Network and chaired the NCTSN Secondary Trauma Supervision Workgroup. He is the developer of the CE-CERT model for intervening with secondary trauma in service providers and the Shielding model of trauma-informed supervision, both of which have been published and disseminated across mental health and child welfare systems. His book, *Reducing Secondary Traumatic Stress: Skills for Sustaining a Career in the Helping Professions* was published in 2022 and is scheduled for a second edition in 2024.

### **REGISTER HERE**

**Fee: \$189**

**For scholarship information email  
Nadine at [ntheberge@snhahec.org](mailto:ntheberge@snhahec.org)**

### **CONTINUING EDUCATION**

#### **Nurses**

Southern New Hampshire Area Health Education Center is an approved provider with distinction of nursing continuing professional development by the Northeast Multistate Division Education Unit, an accredited approver by the American Nurses Credentialing Center's Commission on Accreditation.  
5.25 contact hours Activity Number: 1565

#### **Physicians**

The Southern NH Area Health Education Center is accredited by the NH Medical Society to provide continuing medical education for physicians. Southern New Hampshire Area Health Education Center designates this live activity for a maximum of 5.25 AMA PRA category 1 Credit (s)™. Physicians should claim only the credit commensurate with the extent of their participation in the activity.

#### **Social Workers**

5.25 CEUs pending approval from NASW NH.

#### **Other Professionals**

5.25 CEs for all others professionals.

Compassion Fatigue. Burnout. Vicarious Trauma. Secondary Trauma. Terms that overlap and are different in some ways. But all these concepts have one thing in common: they describe the emotional toll that is exacted upon workers in the human services who deal intensively and empathically with persons who are in engaged in an emotional personal struggle. It is a privilege to work in a profession in which caring about those who suffer is the main tool of our work. But caring also takes a toll. Being close to ground zero when people struggle affects the emotional life of those of us who care.

CE-CERT (Components for Enhancing Career Experience and Reducing Trauma) is a suite of skills to support emotional well-being in workers who are exposed to the effects of secondary trauma. But--as in Star Trek, "survival is insufficient."

Ultimately, the goal of CE-CERT is not merely to survive this work: Rather, the goal is to have a vocation that is uniquely and deeply satisfying.

#### **Learning Objectives:**

- Identify the Components for Enhancing Career Experience and Reducing Trauma
- Discuss strategies to address provider burnout
- Reflect on the relationship of each of the five skill domains to an individual's own sense of well-being during times of job strain or secondary trauma

#### **TARGET AUDIENCE:**

**CLINICIANS OF ALL DISCIPLINES, CASE MANAGERS, COMMUNITY HEALTH WORKERS, ADMINISTRATORS AND OTHER MEMBERS OF THE TEAM.**

# Motivational Interviewing:

## A CONVERSATION ABOUT CHANGE



### What is it?

Motivational Interviewing (MI) is a very specific way of having a conversation about change. The process of Motivational Interviewing discovers each person's values and interests. It is designed to decrease barriers and increase readiness to make a change. It provides concrete, person-focused tools that help to address ambivalence and engagement both on an individual level and at a group level.

These interactive training sessions will help you learn how to bring awareness to individuals about the discrepancy between their current behavior and their future goals. You will learn how to assist them to make meaningful healthy lifestyle changes.

### Learning Objectives:

After this session, participants will be able to:

- Describe active listening and its impact on the behavior change
  - Explain the MI spirit, four processes and mind-set that guide MI conversations
  - Discuss discord and how it impacts the relationship
  - Identify how to effectively provide information and suggestions
  - Demonstrate the use of one of more of the micro skills of OARS
  - Describe sustain talk, change talk and commitment language
- Practice exercises

### Cost: \$45

For questions please contact:  
Brianna Ferraro @  
[bferraro@snhahec.org](mailto:bferraro@snhahec.org)

### Continuing Education

#### Nurses:

The Southern New Hampshire Area Health Education Center is an approved provider with distinction of nursing continuing professional development by the Northeast Multistate Division Education Unit, an accredited approver by the American Nurses Credentialing Center's Commission on Accreditation.  
5.5 contact hours. Activity Number: 1388

#### Physicians:

The Southern New Hampshire Area Health Education Center designates this live activity for a maximum of 5.5 AMA PRA Category 1 Credit(s)<sup>™</sup>. Physicians should claim only the credit commensurate with the extent of their participation in the activity.

#### Social Work:

This program has been approved for 5.5 Category A Continuing Education Credits by the National Association of Social Workers, NH Chapter.  
CE #3828

#### For other professionals:

5.5 professional hours of continuing education

### Target Audience

School nurses, nurses, nurse practitioners, pediatricians, family practice physicians, physician assistants, nurse educators, medical assistants, and behavioral health professionals.

### Register Here

5/30/24 & 6/6/24

9:00am-12:00pm

Live Training via Zoom

Space is limited. The use of video and audio and attendance to both sessions is required in order to receive credit.

#### Lisa Stockwell, MEd

Certified Trainer the Trainer and Life Coach.  
Motivational Interviewing Trainer and member of MINT

# BUILDING THE EQUITY TOOLBOX: A Culturally Effective Organizations Training Series 2024

**May 15, 12:00-1:30 pm**

## Seeking the Why: Equity, Evaluation and the Questions that Matter

Evaluation is a key tool for monitoring and improving services across many sectors. When done well, evaluation can provide insight into how systems and programs and programs are working and if they are working equitably. In this session, learn more about the historical application of evaluation tools as well as how to best utilize and frame evaluation to be a tool for driving equity.



### Continuing Education

- **Nurses**

Southern New Hampshire Area Health Education Center is an approved provider with distinction of nursing continuing professional development by the Northeast Multistate Division Education Unit, an accredited approver by the American Nurses Credentialing Center's Commission on Accreditation.

Up to 1.5 contact hours, Activity Number: 1545

- **Physicians**

The Southern NH Area Health Education Center, accredited by the NH Medical Society, designates this live activity for a maximum of 1.5 AMA PRA Category 1 Credit(s). Physicians should claim only the credit commensurate with the extent of their participation in the activity.

- **Social Workers**

Up to 1.5 CEUs pending approval from NASW NH.

- **For all other health professionals: 1.5 hours**

- **For all other participants**

A certificate of attendance for up to 1.5 hours will be available to serve your professional development needs.

## BUILDING THE EQUITY TOOLBOX: A Culturally Effective Organizations Training Series

*Offered at low cost –Scholarships  
available*

### Series Learning Objectives:

By participating in this series participants will be able to:

- Implement elements of the Culturally Effective Organizations Framework
- Identify and make use of resources for deeper understanding and action
- Advance equity within their own organizations

### Series Learning Outcome:

- 80% of participants will identify an action they will take as a result of this training



**CLICK THE LINK BELOW TO REGISTER:**

[Seeking the Why: Equity, Evaluation and the Questions that Matter](#)

For questions, please contact Brianna Ferraro, [bferraro@snhahec.org](mailto:bferraro@snhahec.org)



# SOUTHERN NH AHEC PRESENTS

## A CHWs CONNECT EVENT



CHW's are invited to join us for a discussion of the Common Indicator Survey report and engage in a dialogue about next steps. Join us for networking and learning!

**Facilitator:**  
**Victoria Adewumi**

Wednesday, May 22nd

10:00 am-11:30am

25 Sundial Avenue, 130W First Floor, Manchester, NH

CLICK HERETO  
REGISTER TODAY >>>

<https://www.eventbrite.com/e/chws-connect-event-tickets-891087074427>



This document financed under a Contract with the State of New Hampshire, Department of Health and Human Services, with funds supported by the Centers of Disease Control and Prevention of the U.S. Department of Health and Human Services (HHS) as part of a financial assistance award by CDC/HHS "NH Initiative to address COVID-19 Health Disparities grant #NH750T000031". The contents are those of the author(s) and do not necessarily represent the official views of, nor an endorsement, by CDC/HHS, or the U.S. Government.

# Peer Workforce Learning Community ECHO

## Target Audience:

All peer support professionals in  
New Hampshire

## Session Dates & Times:

Every other Tuesday  
8:30am-10:00am

5/21, 6/4, 6/18, 7/16, 7/30, 8/13

## What will you gain?

- **Understand** the similarities and differences in the role, code of ethics, and professional boundaries in mental health and substance use recovery peer support
- **Discuss** safety and crisis management, suicide prevention, and grief management strategies
- **Engage** in real time with the New Hampshire peer workforce

Questions?

Contact:

Cait McAllister

[unh.projectecho@unh.edu](mailto:unh.projectecho@unh.edu)

[Learn more about Project ECHO!](#)

[Click HERE to register!](#)



### **Upcoming Preceptor Webinars**

The New England Nursing Preceptor Academy is offering live webinars for nurse preceptors. These webinars are free, online, 60-minutes and offer CE credit. Attendance is monitored and the webinar must be attended in full. At the conclusion of the webinars, a survey will be available and must be completed to qualify for CE credit. Certificates will be emailed to you within 10 business days.

#### **Sensitive Content in the Healthcare Learning Environment**

Wednesday, March 20, 2024, from 11:00 – 12:00pm ET

Presented by Julie West, DNP, MHA, PMHNP-BC

The webinar will discuss the delivery of sensitive subject material in healthcare education, including the use of trigger or content warnings, review the current research on best strategies to mitigate or manage these reactions and how to help students develop the emotional regulation skills needed to ensure they provide safe and quality care even in the face of emotionally laden events.

[Click here to register for \*Sensitive Content in the Healthcare Learning Environment\*](#)

#### **Precepting and the Science of Learning**

Tuesday, April 9, 2024, from 1:00 – 2:00pm ET

Presented by Thomas Van Hoof, MD, EdD, FACMQ

This webinar will describe four evidence-based strategies of the science of learning and describe how applying them while precepting in the clinical setting will help ensure more effective teaching and learning.

[Click here to register for \*Precepting and the Science of Learning\*](#)

#### **Clinical Performance Remediation: Be Prepared for Those Difficult Conversations**

April 25, 2024, from 12:00 – 1:00pm ET

Presented by Amanda Moreau, MSN, RN

This webinar will address clinical performance concerns. Using an interactive and engaging approach, the presenter will survey participants to gauge their current practices in their clinical teaching roles when gaps are identified.

[Click here to register for \*Clinical Performance Remediation: Be Prepared for Those Difficult Conversations\*](#)

#### **Intentional Teaching/Precepting Challenges Part 2**

May 7, 2024, from 12:00 – 1:00pm ET

Presented by Danielle Hebert, DNP, MBA, MSN, ANP-BC

This webinar will take a deep dive into effective precepting utilizing available tools to address commonly encountered barriers. The use of precepting plans will be explored further using case-based methodology.

[Click here to register for \*Intentional Teaching/Precepting Challenges Part 2\*](#)

#### **Guided Reflective Practice in the Clinical Setting: What you need to know**

May 20, 2024, from 12:00 – 1:00pm ET

Presented by Barbara O'Neill, PhD, RN

This webinar will define reflective practice in the context of nursing education and provide evidence of its potential to enhance learning and growth, especially in the development of critical thinking skills needed for clinical practice.

[Click here to register for \*Guided Reflective Practice in the Clinical Setting: What you need to know\*](#)

#### **What does Competency in Nurse Preceptorship look like?**

May 29, 2024, from 12:00 – 1:00pm ET

Presented by Barbara O'Neill, PhD, RN and Colleen Ryan, PhD, RN, SFHEA

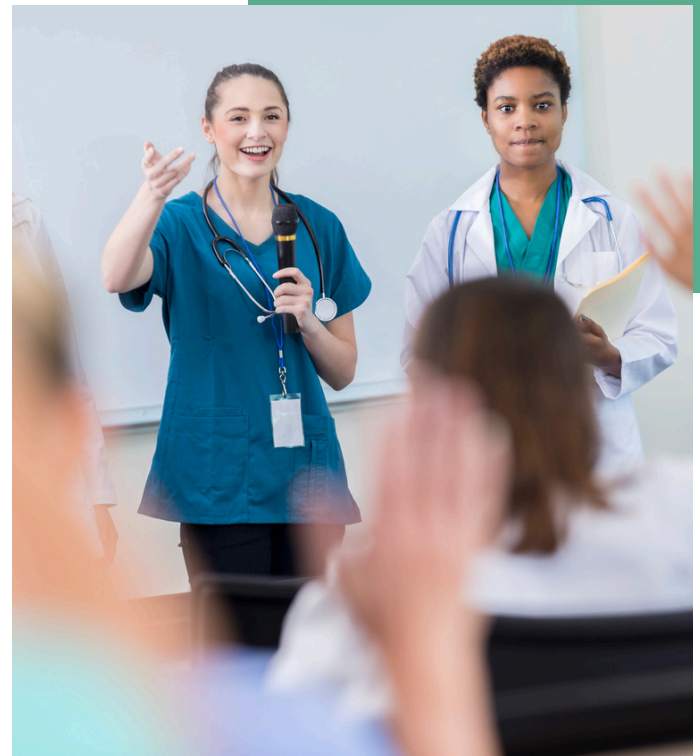
This webinar will discuss the various preceptor competency domains and how the competency descriptors may help nursing preceptors, and those wishing to work in this role, develop and master these competencies.

[Click here to register for \*What does Competency in Nurse Preceptorship look like?\*](#)



# 2024 PRECEPTOR RECOGNITION AWARDS

Presented by the New Hampshire  
Area Health Education Center  
Network



We want to recognize some extraordinary preceptors who are engaging in teaching and learning with our health professions students. We appreciate their contribution to building our health care workforce pipeline and want to honor their hard work.

Preceptors and clinical supervisors help to build the pipeline for the health care workforce here in NH. We are looking to celebrate their commitment to teaching and learning.




Preceptors contribute immensely to the education of our incoming health career workforce, and the experiences and learning that occurs when working with patients and clients in community settings is invaluable for many students.

**Nominations are open through  
June 1st**

**[Click Here for the Nomination Form](#)**



[View the 2023 Preceptor Recognition Awards eBook Here](#)

-  [Southern NH AHEC](#)
-  [NH AHEC Program Office](#)
-  [Northern NH AHEC](#)

# SAVE THE DATE



## 2024 Infection Prevention Conference

Partnership is the Key

Join colleagues from various disciplines and healthcare settings across NH to:

- Discuss best practices for infection prevention and antibiotic stewardship.
- Receive updates on antimicrobial resistance epidemiology.
- And partner to reduce infections across continuum of care.

### **Audience:**

physicians | pharmacists | nurses | laboratorians | public health professionals | environmental services providers | infection preventionists | veterinary professionals | others interested in infection prevention



## SEPT. 13, 2024

8:00am - 4:00pm

Grappone Center, Concord NH

This conference is supported by the Centers for Disease Control and Prevention (CDC) of the U.S. Department of Health and Human Services (HHS) as part of a financial assistance award totaling \$436,817 with 100 percent funded by CDC/HHS. The contents are those of the author(s) and do not necessarily represent the official views of, nor an endorsement, by CDC/HHS, or the U.S. Government.



SEPT. 13, 2024



**2024  
Infection  
Prevention  
Conference**

Partnership is the Key



**Grappone Center  
Concord NH**

# Call for Abstracts

The planning committee for the Infection Prevention Conference is soliciting conference abstract proposals for presentations or panel discussions at the conference being held at The Grappone Center, Concord, NH on September 13, 2024.

## **Conference Learning Objectives:**

- Describe best practices in infection prevention
- Identify current strategies in addressing antimicrobial resistance
- Identify current trends in antimicrobial resistance nationally and in NH

## **Topic Areas May Include:**

- Infection Prevention
- Antimicrobial stewardship
- Antimicrobial resistance
- Healthcare Associated Infections
- Sepsis
- IP for Emergency Medical Technicians and First Responders
- Reporting/ Regulatory requirements
- National Health Safety Network
- Creating emergency preparedness plans
- Drug diversion of injectable medications
- One Health
- Antimicrobial resistance in veterinary settings

## **Who should consider submitting an application?**

Infection Preventionists | Quality Improvement Professionals | Epidemiologists | Nurse Practitioners | Educators | Physicians | Public Health Professionals | Policy Makers | Innovators | Researchers | Clinicians/Practitioners | Administrators | Students/Residents | Veterinarians | Pharmacists | Laboratorians



SEPT. 13, 2024



## 2024 Infection Prevention Conference

Partnership is the Key



Grappone Center  
Concord NH

### **Selection Process:**

Applications will be selected by the Conference Planning Committee based on the content of this application and its relevance to the continuing education and professional development needs of attendees. Other criteria for selection includes the desire to have a well-balanced agenda and current topics. Applicants will be notified of their selection and will receive a speaker letter outlining additional information to be submitted to comply with continuing education requirements.

### **Timeline:**

Applications are due by **May 7th**.

The Conference Planning Committee will review abstracts and notify lead presenters by mid-May.

### **Use the following checklist as a guide to providing a complete application:**

- Title of Presentation
- Lead presenter/author name and credentials
- Additional presenter/author name(s) and credentials (if needed)
- Short description of presentation (300 word limit)
- Learning Objectives (2-3)

**Please use the following link to submit your proposal:**

**<https://www.surveymonkey.com/r/infectionpreventionconf2024>**

Once an application is accepted, an educational planning table, biographical information and a conflict of interest form (all presenters) must be submitted to Southern NH AHEC by **May 31, 2024**.

For questions, please contact Brianna Ferraro at [bferraro@snhahec.org](mailto:bferraro@snhahec.org)





Earn a  
microcredential  
badge and CEUs  
with each  
module!

# UNH TELEHEALTH CERTIFICATE



## Who Should Join?

- Physicians
- Nurses & Nurse Practitioners
- Occupational Therapists
- Speech Language Pathologists
- Physical Therapists
- Registered Dietitians
- Psychologists
- Social workers

....And more!

## Core Modules:

- Fundamentals of Telehealth
- Telehealth Etiquette
- Telehealth Technology

## Elective Modules:

- Legal & Regulatory Issues
- Billing & Reimbursement
- Remote Patient Monitoring

The UNH Telehealth Certificate program covers a range of telehealth topics, and the asynchronous structure lends itself to busy individuals who prefer to complete coursework at their own pace.

**MODULES OPEN MARCH 1, 2024**

**REGISTER**  
**NOW!**



Questions? Contact us at:  
[unh.telehealth@unh.edu](mailto:unh.telehealth@unh.edu)



College of Health and Human Services  
Center for Digital Health Innovation

# NH Health Equity Summit

## Achieving Health Equity for All

May 23, 2024

8:00 AM – 3:15 PM

Church Landing, Meredith NH

The Health Equity Summit will provide participants with thought provoking presentations, peer learning opportunities, practical strategies and resources to advance health equity in diverse health care settings.

After the summit, participants will be able to:

- Describe the essential components of a roadmap to operationalize health equity as part of their strategic plan.
- Gain confidence in building the culture, shared understanding, and commitment for health equity throughout their organization.
- Review available tools and resources to advance health equity in their organization.
- Identify strategies and tactics to address social factors of health and health inequities.
- Bring examples of initiatives aimed at advancing health equity back to their organizations.

**Who should attend:** Health care staff and providers from administration, health equity and DEI, population health, community health, patient and family engagement, clinical staff.

 [Click Here to Register](https://healthynh.org/events/2024-health-equity-summit)

For more information, agenda and speakers visit:

<https://healthynh.org/events/2024-health-equity-summit>  
or email Beth Gustafson Wheeler: [bwheeler@healthynh.org](mailto:bwheeler@healthynh.org)



### Keynote

#### Bridging the Gap: A Strategic Blueprint for Health Equity

*Jermaine Moore*

Founder and Principal Consultant  
The Mars Hill Group



### Afternoon Keynote

#### Making the Connections

*Nancy Myers*

VP, Leadership and System Innovation  
American Hospital Association

### Session Topics

Hospital Experiences in Advancing Health Equity  
The Leaders Role in DEI  
The Role of Data in Equity: Examining New Frameworks  
Identify, Awareness, and Belonging  
Building and Leveraging Community Partnerships  
Transgender Populations: Communication and Care  
Patient Family Engagement Using a Health Equity Lens  
Applying a Health Equity Framework to Patient Safety  
Events and Root Cause Analysis

**Nursing:** Southern New Hampshire Area Health Education Center is an approved provider with distinction of nursing continuing professional development by the Northeast Multistate Division Education Unit, an accredited approver by the American Nurses Credentialing Center's Commission on Accreditation.

**4.75 contact hours Activity Number: 1555**

**Physicians:** This activity has been planned and implemented in accordance with the accreditation requirements and policies of the Accreditation Council for Continuing Medical Education (ACCME) through the joint providership of Southern NH AHEC and Foundation for Healthy Communities. The Southern NH AHEC is accredited by the NH Medical Society to provide continuing medical education for physicians. Southern New Hampshire Area Health Education Center designates this live activity for a maximum of **4.75 AMA PRA category 1 Credit (s)**<sup>™</sup>. Physicians should claim only the credit commensurate with the extent of their participation in the activity.

**Social Workers:** This program has been approved for **4.75 Category A Continuing Education Credits** by the National Association of Social Workers, NH Chapter. CE #4230

For other professionals: **4.75 professional hours of continuing education.**

For all other participants: A **certificate of attendance for up to 4.75 hours** will be available to serve your professional development needs.

Partner: Supported by the Medicare Rural Hospital Flexibility Program (Flex) Grant





2023  
New Hampshire Preceptor  
Recognition  
Awards

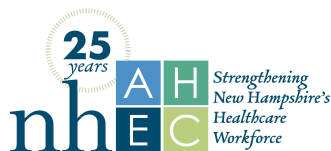
Please join the NH AHEC Network in recognizing some extraordinary preceptors who are engaging in teaching and learning with our health professions students. We appreciate their contribution to building our health care workforce pipeline.



Scan the QR code or  
follow the link to see the  
full book of awards.

[Click Here to View the Full Book](#)

Presented by the  
New Hampshire  
Area Health Education Center  
Network



# NEW HAMPSHIRE COMMUNITY HEALTH WORKER SURVEY



Survey administered  
by Southern NH Area  
Health Education  
Center and the CHW  
Center for Research  
and Evaluation  
Nov-Dec 2023



## CHWs

### COMMUNITY HEALTH WORKERS

are front line public health professionals who share life experience, trust, compassion, and cultural and value alignment with the communities they serve.



# 42%

of CHW's work in clinical settings.  
58% work in community based organizations, local health departments, schools, insurance providers, and family resource centers.



## 10 CORE ROLES

CHWs are most likely to provide **care coordination**, **system navigation** and **advocacy** on behalf of individuals and communities.

“ I really enjoy being a CHW, however I think we need to be appreciated more for the difference we make...”

-CHW Respondent



## NH CHWs

often work with people who are experiencing homelessness, people with substance use disorders, or people with disabilities





## Community Health Workers

# CHW APPRENTICESHIP

### CHW ADVANCE! APPRENTICESHIP

CHW Advance! is a HRSA funded program to enhance the CHW Workforce. The CHW Apprenticeship provides the opportunity for increased training and skill-building for CHWs to support improved outcomes for people in our communities.

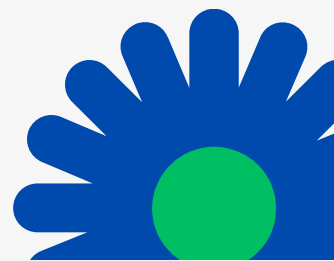
**Eligibility:** New and existing employed CHWs in NH.

### APPRENTICESHIP ELEMENTS

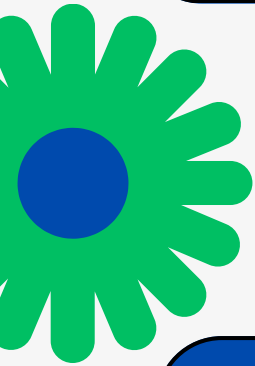
The CHW Apprenticeship is a one year program that provides:

- 144 Hours of paid training (Related Instruction).
- 2000 Hours on-the-job training
- Mentoring Support
- Regular Competency Assessments
- Up to \$1,500 to cover mileage
- \$7500 Stipend

Contact Carli Hughes, CHW at [chughes@snhahec.org](mailto:chughes@snhahec.org)  
Visit the website: <https://www.snhahec.org/chw-advance.html>



## Community Health Workers



# UPSKILLING

### INCREASE YOUR SKILLS

CHW Advance! will pay for the training. Pick from a list of our approved trainings or contact us to approve a training of your choice.

### CHW ADVANCE!

CHW Advance! is a HRSA funded program to provide training and new skills to CHWs living in NH and VT.

### RECEIVE A STIPEND

In addition to CHW Advance! paying for the training, you can receive a \$1000 stipend to support you in your training/upskilling.

### TO LEARN MORE AND APPLY:



<https://www.snhahec.org/chw-upskilling.html>



## Steps for Upskilling:

1. Identify a course you would like to take
2. Register with CHW Advance! ([Click Here](#))
3. Receive code to register for course
4. Complete course & send us your certificate
5. Submit required CHW Advance paperwork and receive your stipend
6. Use your new skills to grow your career

## TRAINING OPTIONS

- Recovery Coach Academy
- Health Coaching
- Enhanced Care Coordination
- Child, Youth and Family Systems and Behavioral Health
- Diabetes Community Care Coordinator
- Online training series with MCD Global
- Choose your own training!

For more information and to apply please visit our website:

<https://www.sنهاhec.org/chw-upskilling.html>

